

VectorLink Durability Monitoring

Stephen Poyer | February 2020
RBM VCWG Meeting
LLIN Priorities workstream



USAID
FROM THE AMERICAN PEOPLE



U.S. President's Malaria Initiative





Durability monitoring countries

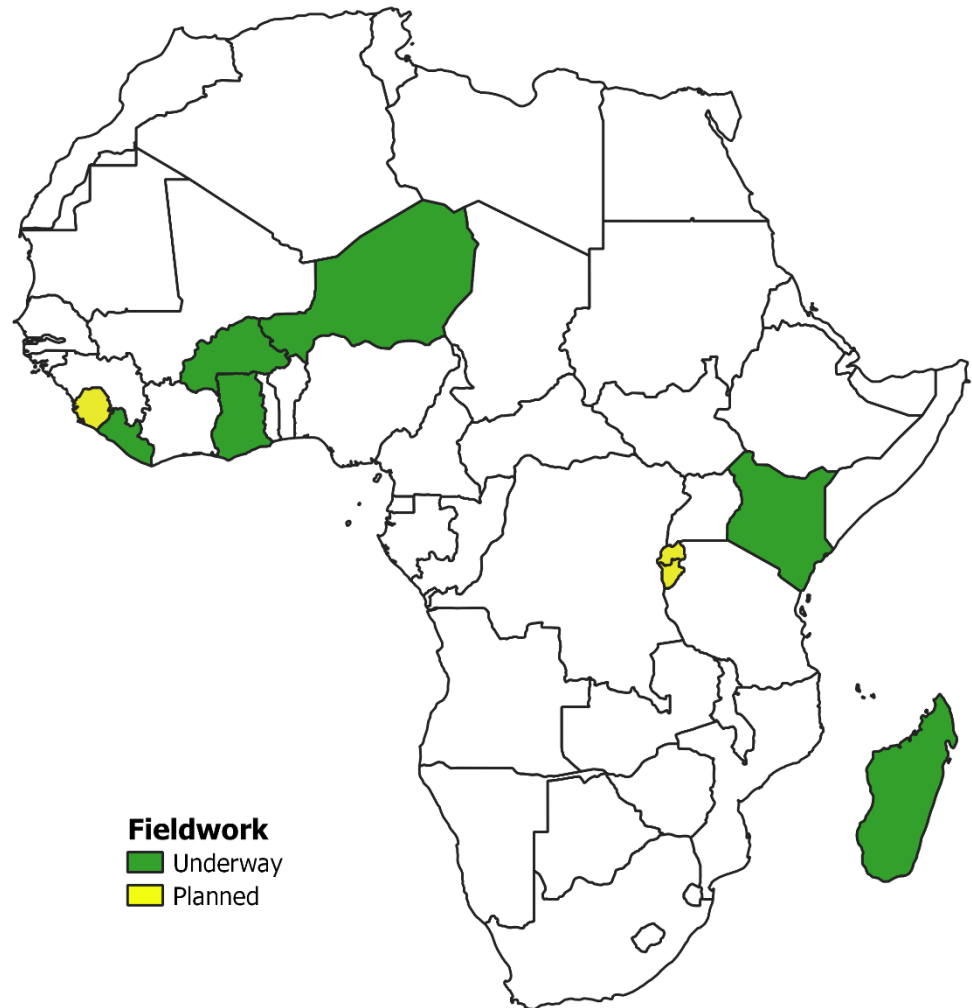
PMI VectorLink is supporting durability monitoring in 9 countries

Fieldwork underway

- Burkina Faso
- Ghana
- Kenya
- Liberia
- Madagascar
- Niger

Fieldwork planned

- Burundi
- Rwanda
- Sierra Leone





Type of ITN studied

New study countries bring a focus on PBO synergist and dual-AI ITNs

Standard ITNs only

Ghana Kenya

Liberia Madagascar

Niger

≥1 PBO-synergist and/or dual-AI ITN

Burkina Faso

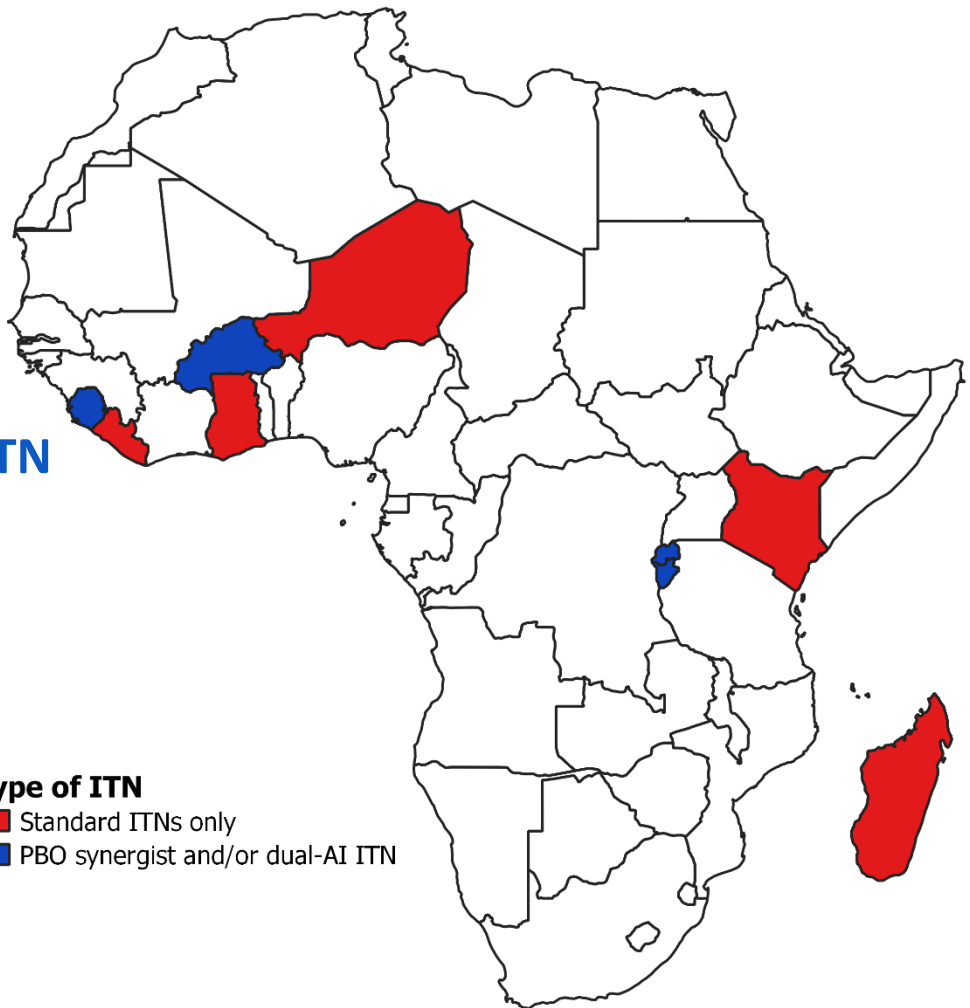


Burundi

Rwanda

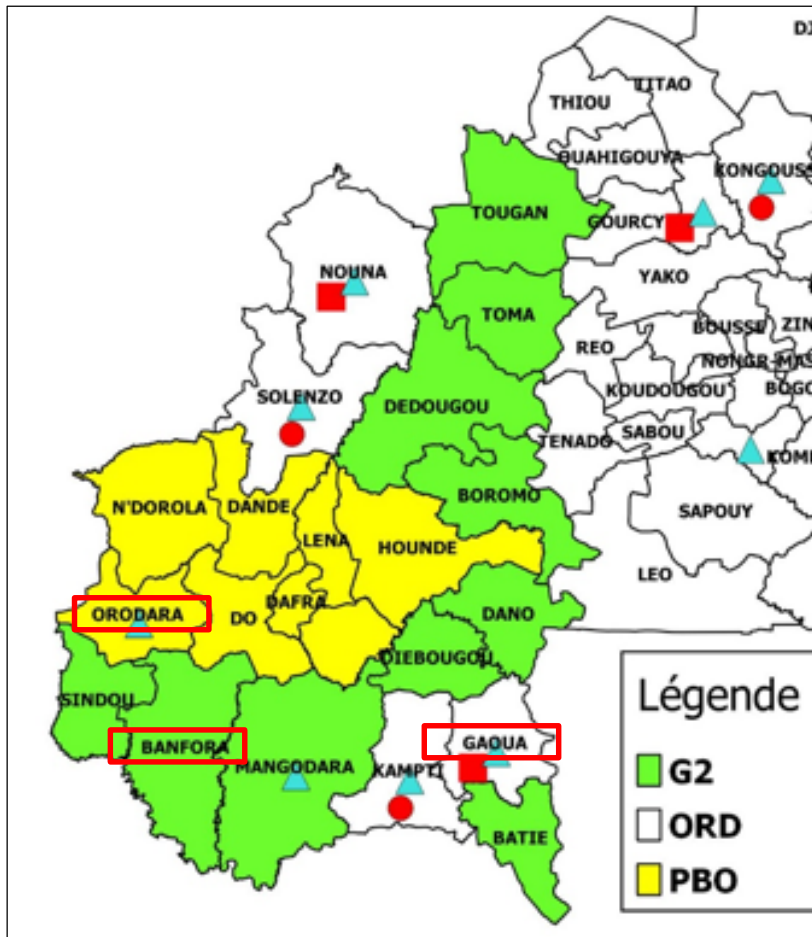


Sierra Leone





Burkina Faso



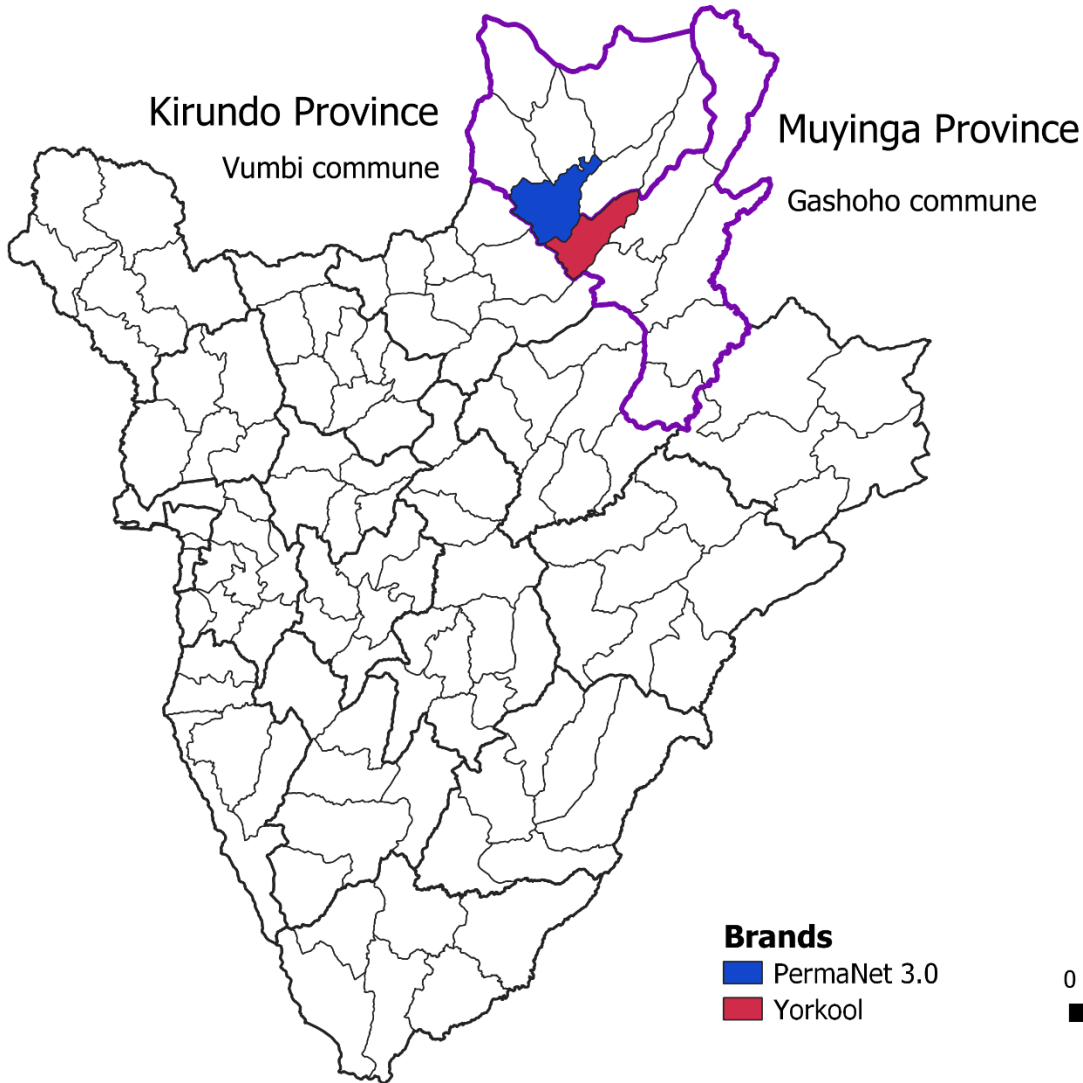
Banfora health district
Interceptor G2

Orodara health district
PermaNet 3.0

Gaoua health district
Interceptor



Burundi

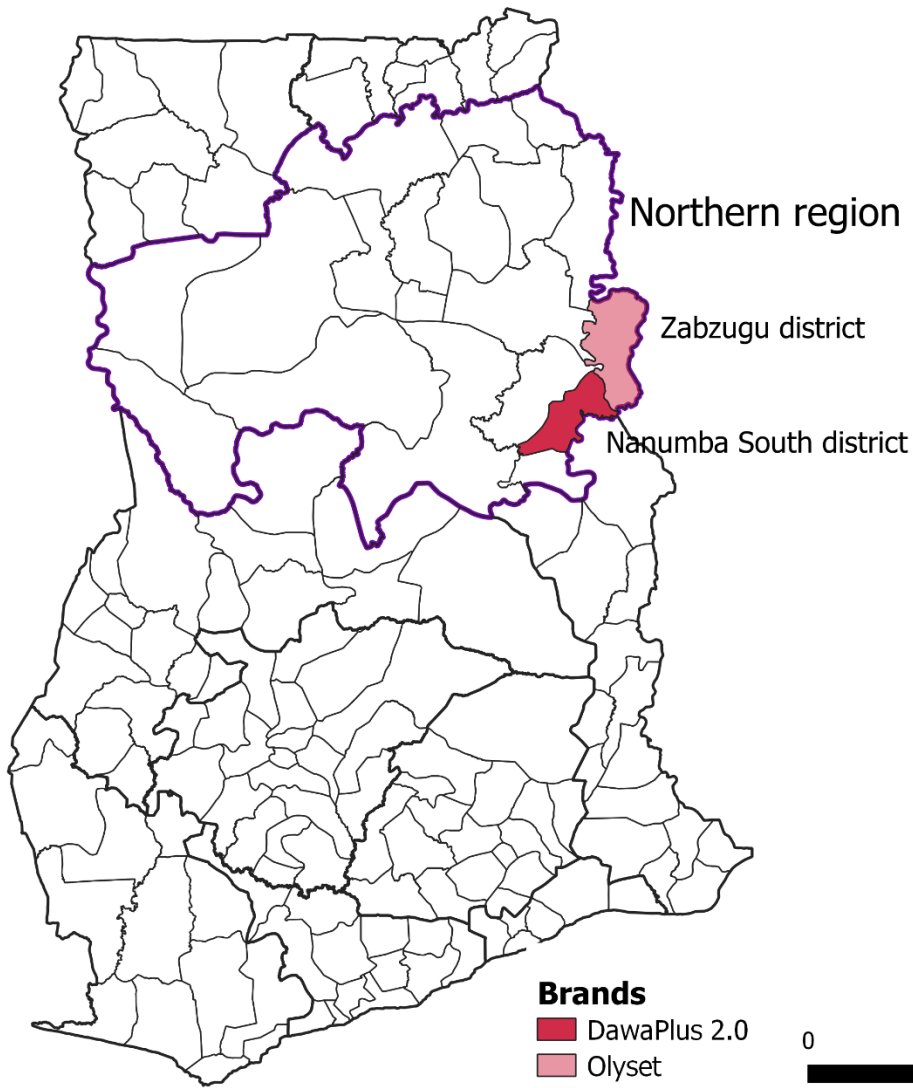


Vumbi commune

PermaNet 3.0

Gashoho commune

Yorkool

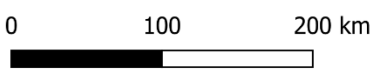


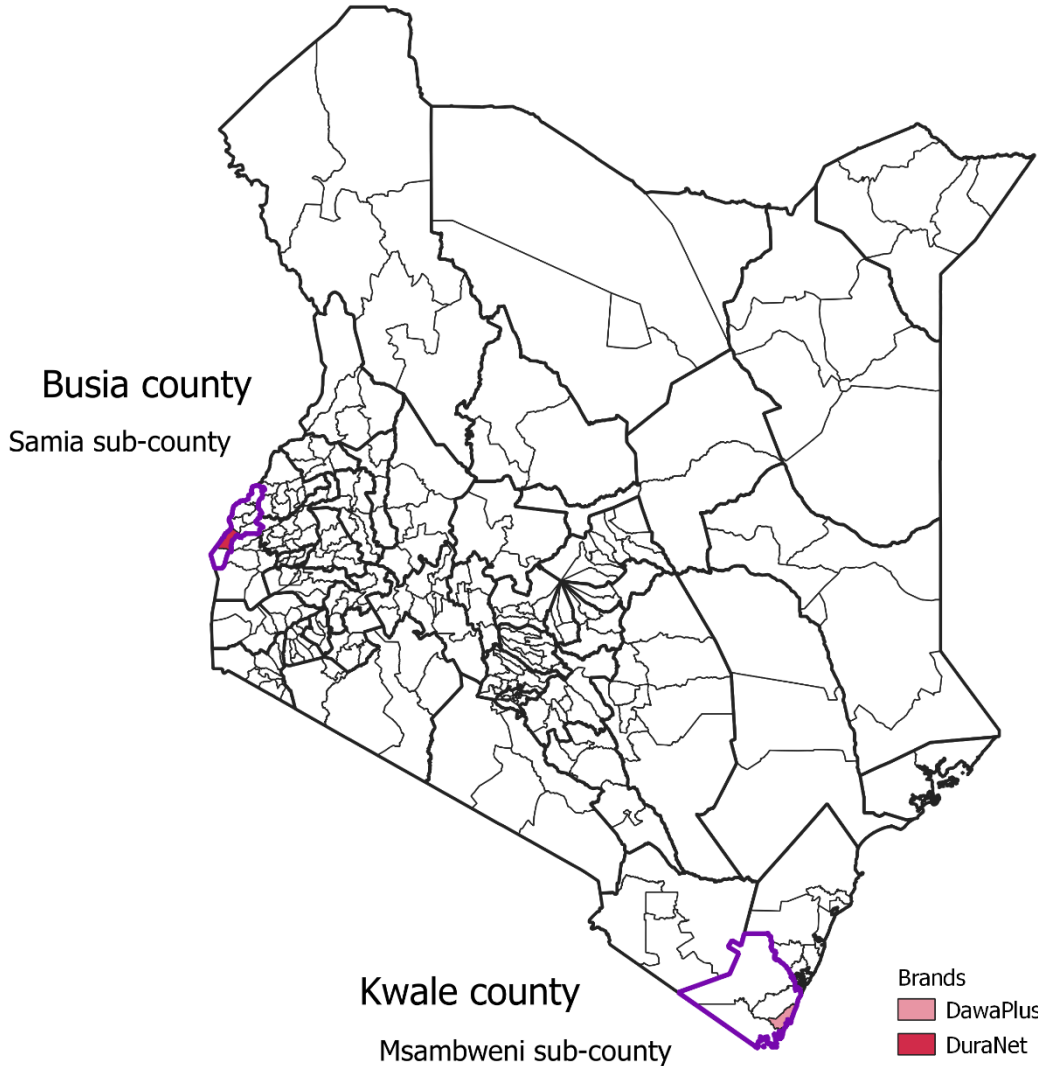
Nanumba South district

DawaPlus 2.0

Zabzugu district

Olyset





Msambweni sub-county

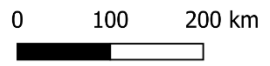
DuraNet

Samia sub-county

DawaPlus 2.0

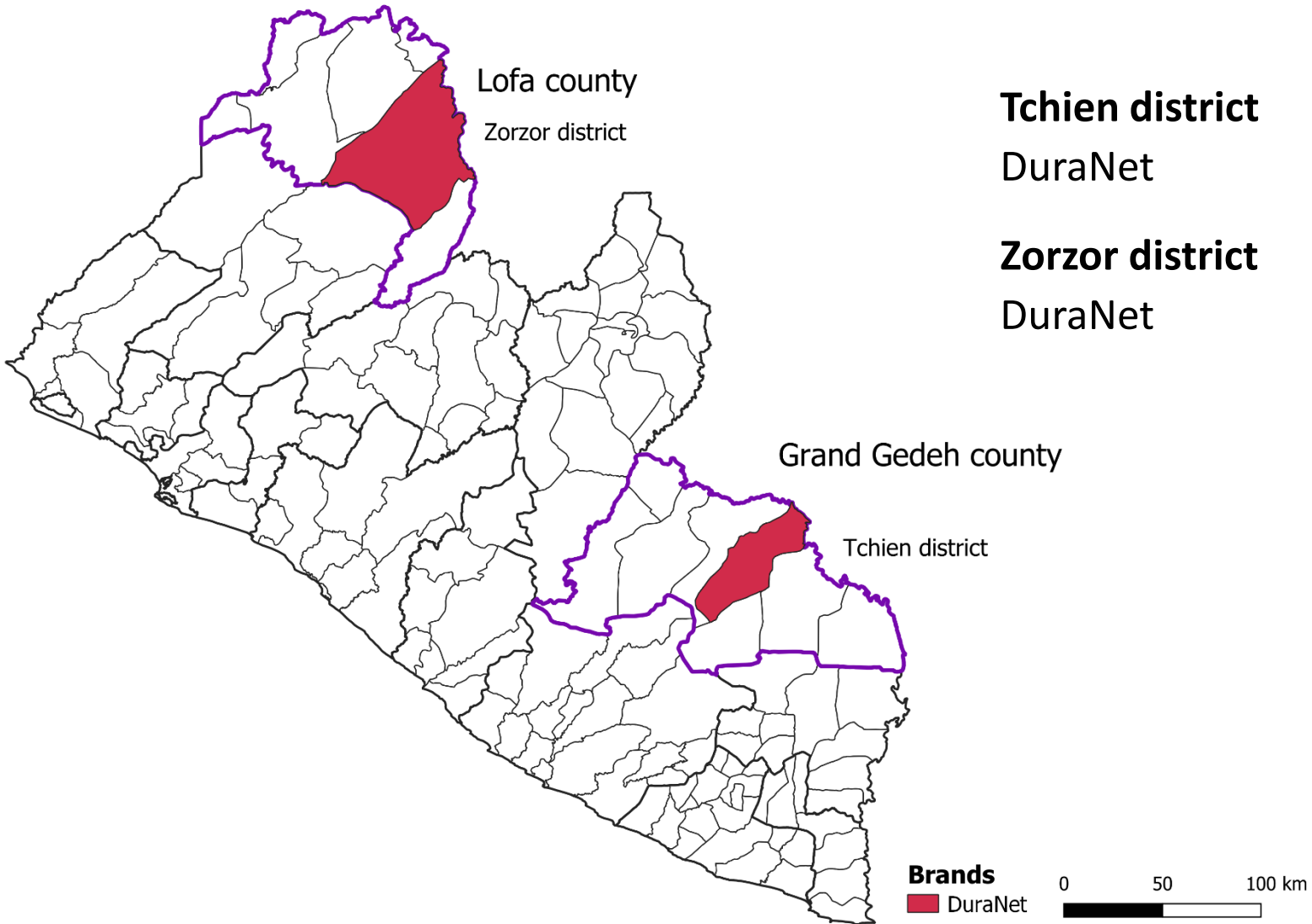
Brands

- DawaPlus 2.0
- DuraNet



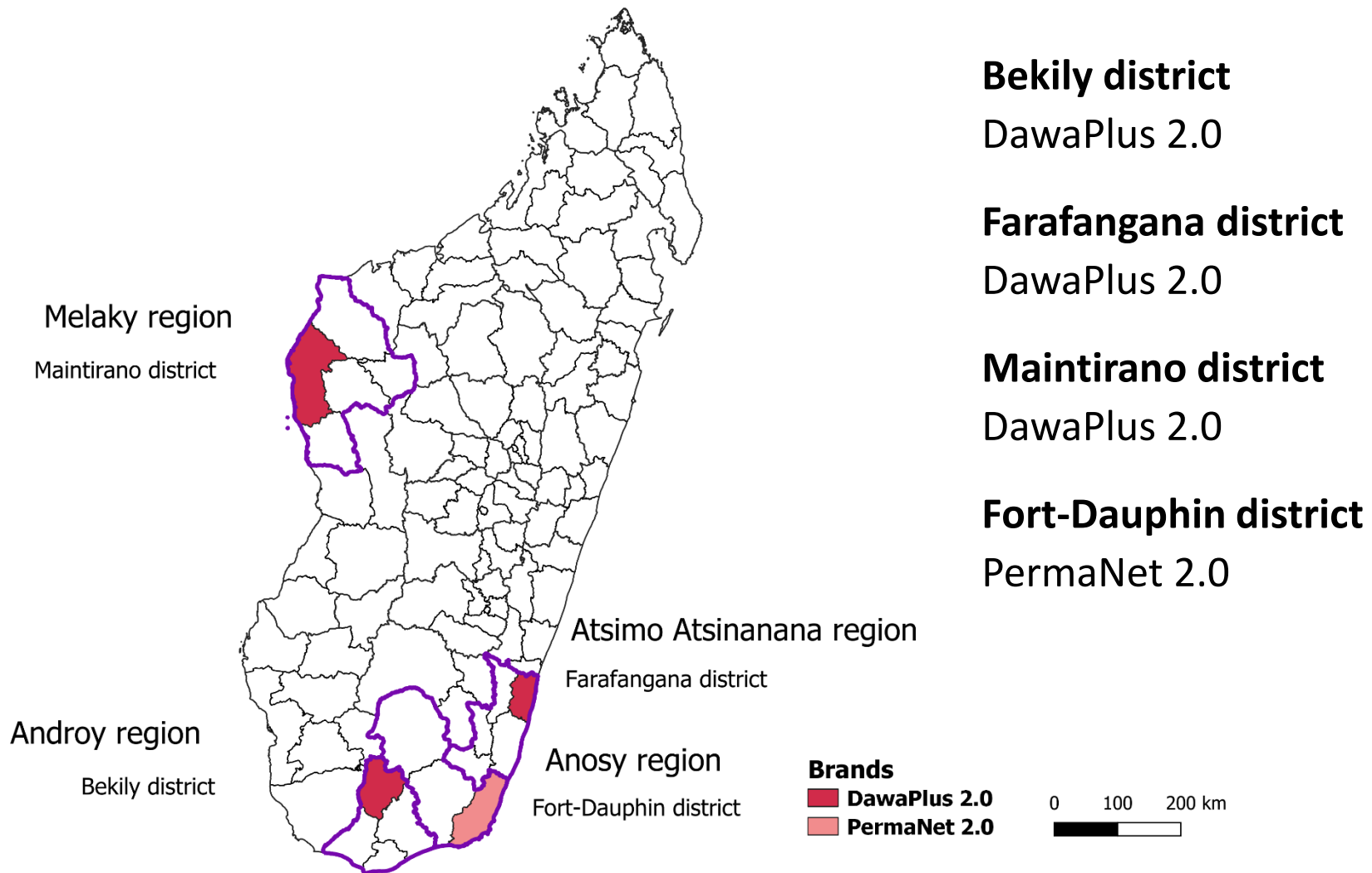


Liberia





Madagascar





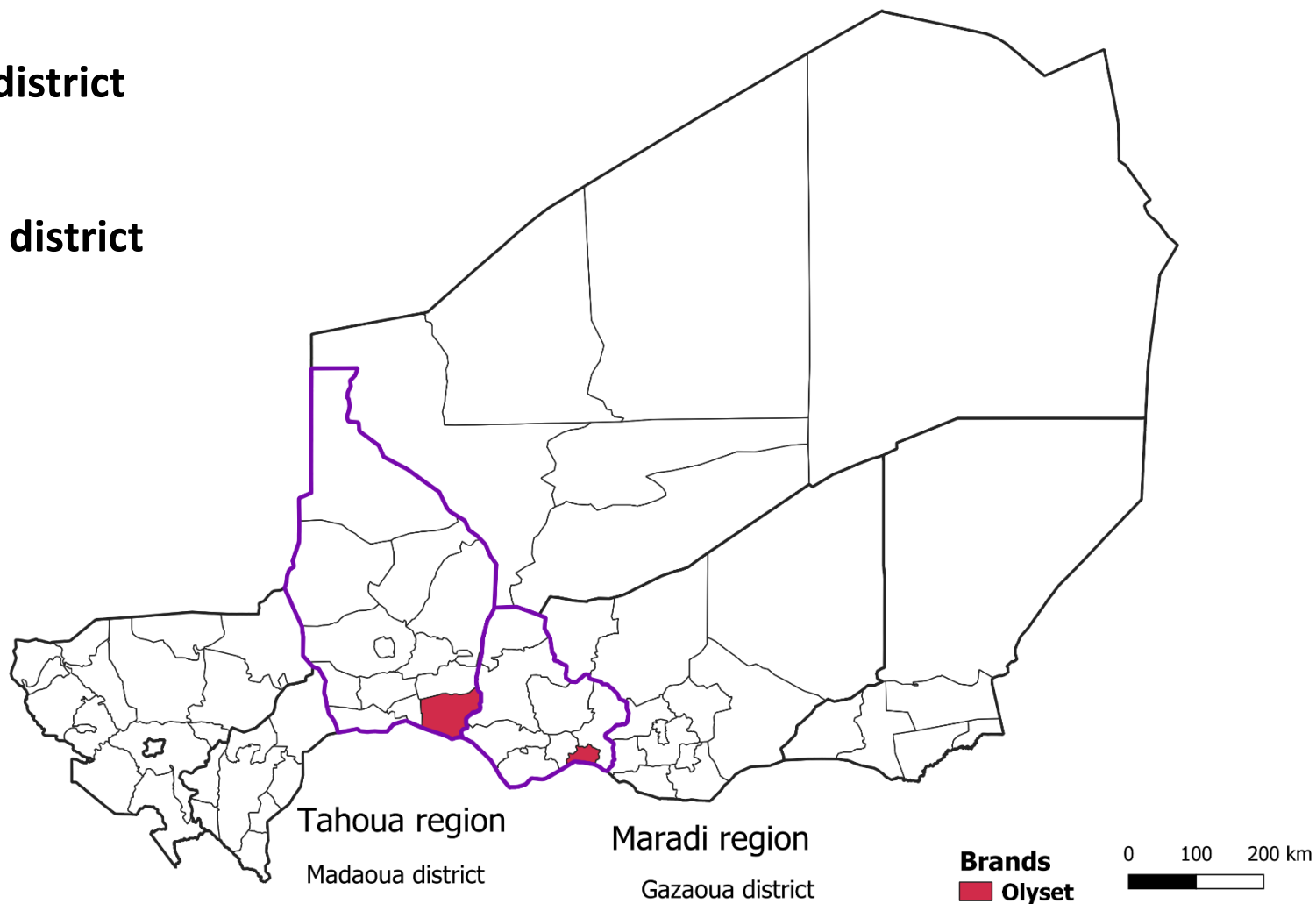
Niger

Gazaoua district

Olyset

Madaoua district

Olyset





Rwanda

Burera district

Olyset

Karongi district

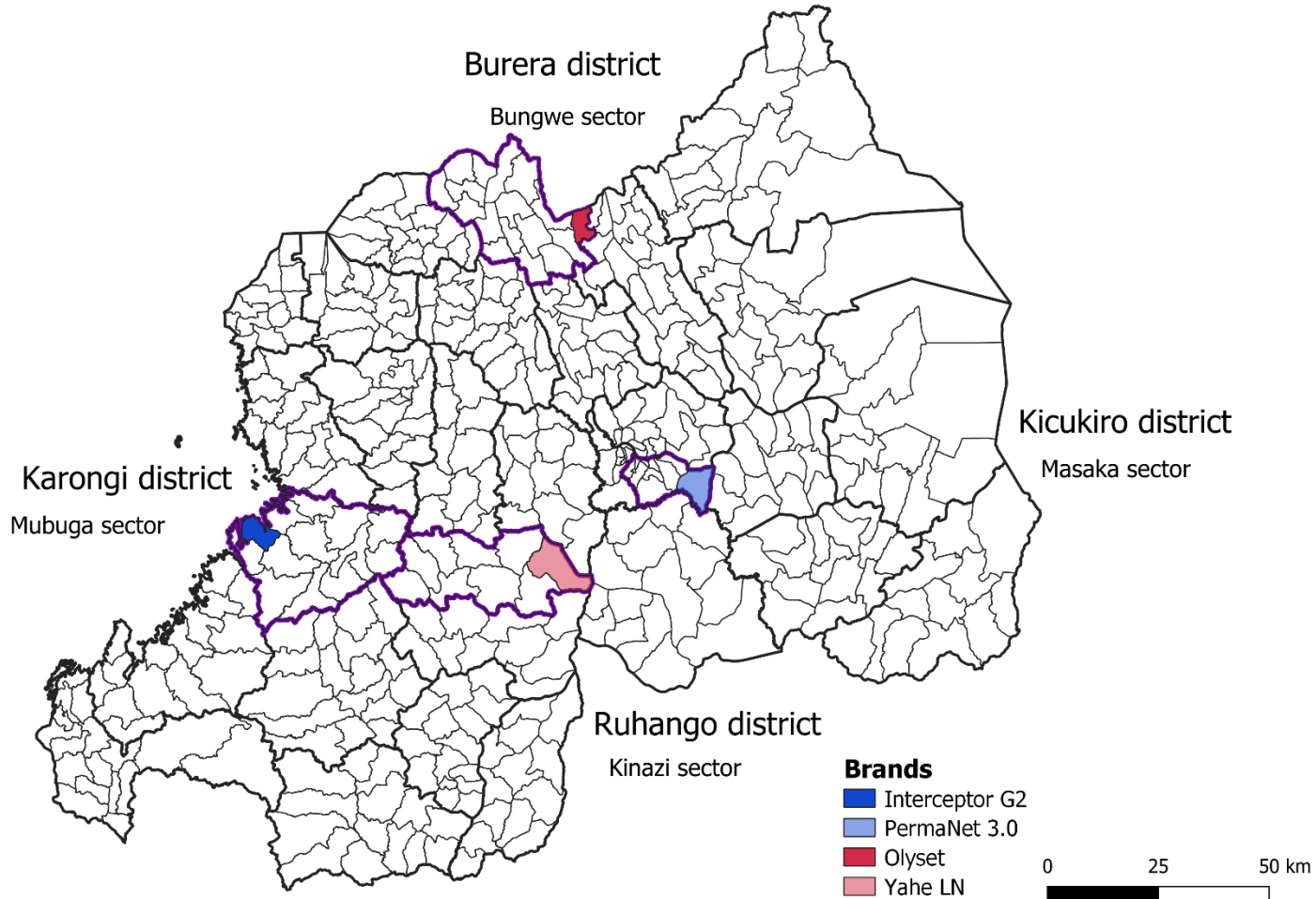
Interceptor G2

Kicukiro district

PermaNet 3.0

Ruhango district

Yahe LN





Activity timelines

Endline results will be available from mid-2021 onwards

Year	2020	2021	2022	2023
Burkina Faso	12m	24m	36m	
Burundi	BL 12m	24m	36m	
Ghana	24m	36m		
Kenya	36m			
Liberia	24m	36m		
Madagascar	24m	36m		
Niger	24m	36m		
Rwanda	BL	12m	24m	36m
Sierra Leone	BL	12m	24m	36m



Durability monitoring process updates

- **Extended follow-up training**
 - Increased follow-up training agenda from 3 to 4 days
 - More time for practical activities and learning, where necessary
- **Strengthened ODK files**
 - Additional internal logic checks to minimise errors
- **Master syntax for data analysis**
 - More detailed comments and syntax descriptions to facilitate uptake
 - Added use of *tabout* to automate table output to Excel
- **Move to SurveyCTO platform**
 - More user-friendly outputs and easier field submission of data
 - Cost \$200 per country per active month
- **Bioassay activities**
 - On hold pending new SOPs



Acknowledgements

NMCP staff in all durability monitoring countries

PMI

VectorLink and New Nets Project colleagues

Participant households and community members

Data collection partners and staff, and laboratory partners and staff

- Institut de Recherche en Sciences de la Santé, Burkina Faso
- Noguchi Memorial Institute for Medical Research, Ghana
- Pan-African Mosquito Control Association, Kenya
- Malaria and Other Parasitic Diseases Division, Rwanda
- University of Liberia Pacific Institute of Research and Evaluation, Liberia
- Centre Suisse de Recherche Scientifique, Cote d'Ivoire
- Institut Pasteur de Madagascar
- PSI Burundi
- PSI Madagascar
- PSI Niger



THANK YOU



USAID
FROM THE AMERICAN PEOPLE



U.S. President's Malaria Initiative

U.S. PRESIDENT'S MALARIA INITIATIVE

vectorlink

INTELLIGENT › INNOVATIVE › INTEGRATED